

The background of the slide features a blue-toned molecular structure with spheres and connecting rods, resembling a chemical or biological network.

Accelerating the transition to SSbD chemicals, processes, materials, and products

Anne Chloé Devic
SSbD Consulting Europe
IRISS Industry hub coordinator

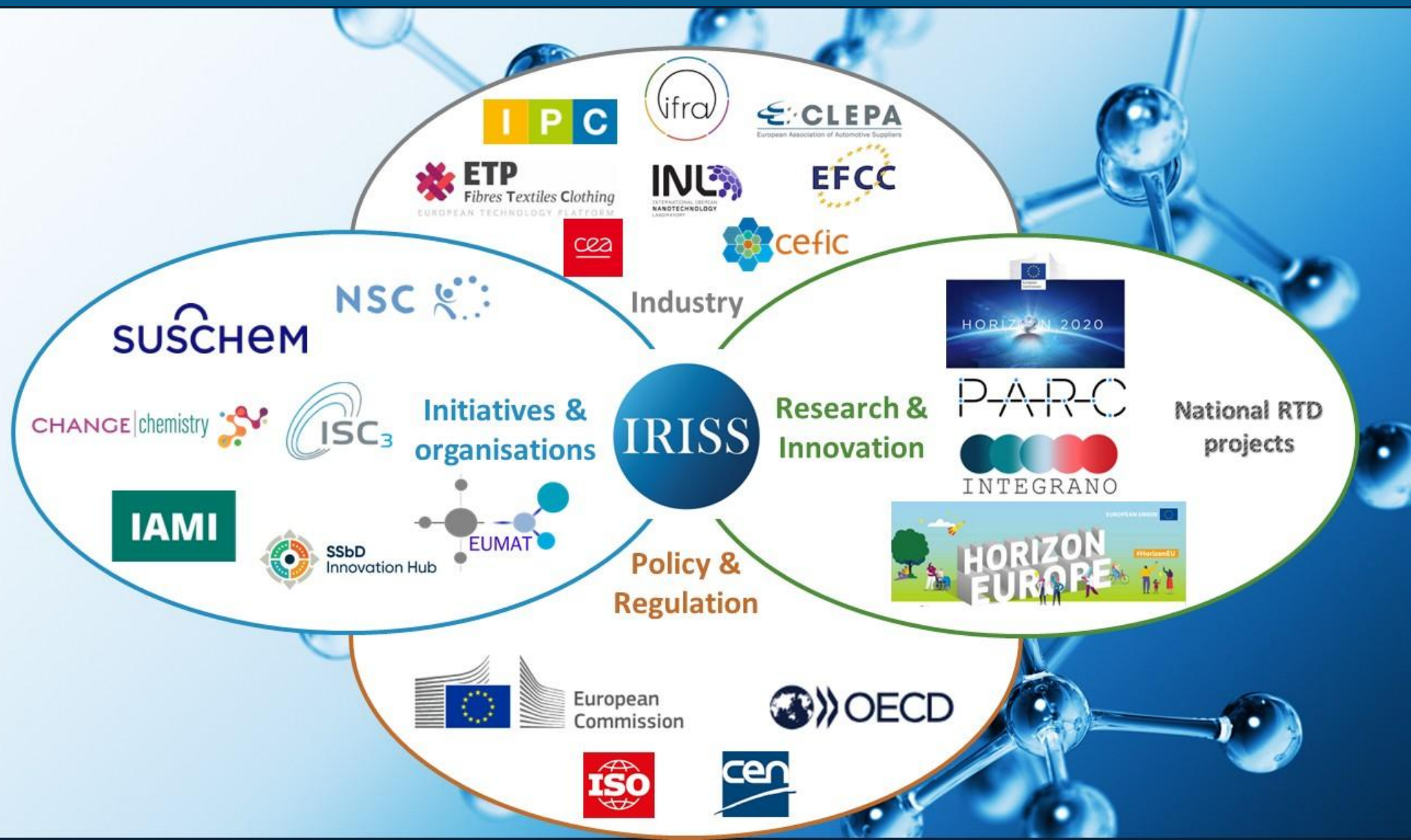
Synergize and connect

IRISS



IRISS Collaborations

IRISS



Key outcomes from the value chains

- Valuable insights about SSbD's role in the different value chains and what needs to be addressed
- Case studies presented, introducing challenges and solutions/alternatives to each value chain
- A good understanding on the skills and knowledge already represented in the industry, in each value chain
- Gap analysis (including criteria): still lacking knowledge for the industry to fully embrace SSbD

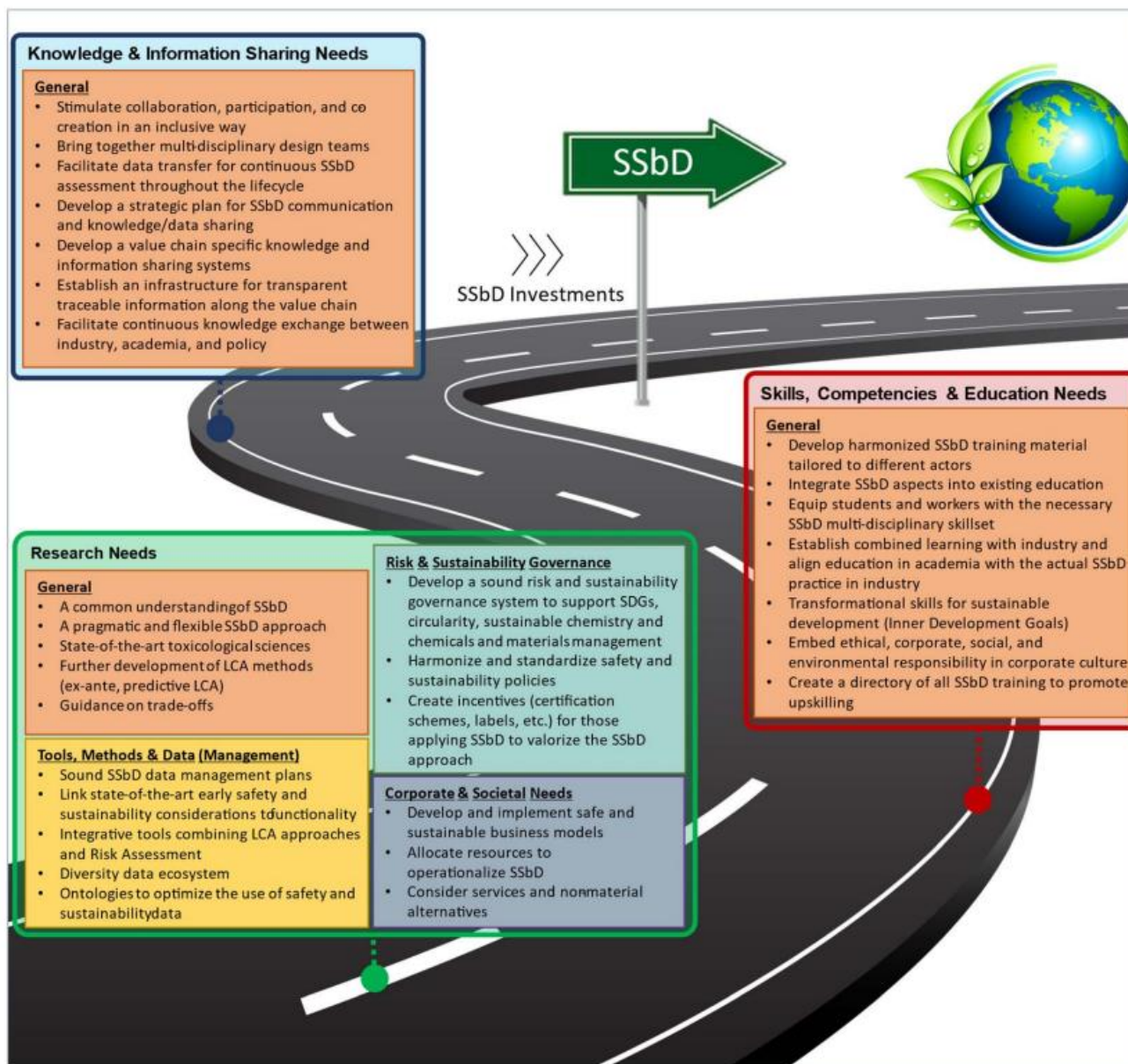


Gaps to address

- Lack of harmonized and easy to apply **tools and protocols**
- Unavailability of **open databases** with rich datasets
- Uncertainty of the safety impacts at **early stage** of the development
- Limited number of **internal experts**
- Problematic assessment for **complex products** with multiple materials and chemicals
- Full assessment at **late stages of innovation**



SSbD Supportive Roadmap



RSC
Sustainability,
2024,2, 2833-2838

Research needs



- How to **implement** SSbD in the innovation process
- Further development of **LCA methods**
- **Updated/new** datasets and databases
- Complementary methods for **Risk Assessment** and **Sustainability Assessment**
- **Traceability** throughout the value chain (including communication to consumers)
- Implementation of **circularity** along the value chains
- Transition from conventional materials to **biobased alternatives**
- Research on **alternatives to the critical raw materials**
- Development of efficient **recycling methods** and technology
- Further development of **services** and **non-material alternatives**



Skills and knowledge

- **Strong skills on safety** – different focuses per value chain – in-house/suppliers
- **Innovation/technical skills**: functionality/cost + sustainability
- **Skills on sustainability are less mature**, need for more internal knowledge, heavily depending on strategy/market demand/Investment capacity
- SSbD requires a **general understanding** of chemistry and material science and **system thinking**
- Knowledge and skills needed **along the value chain**
- Call for a **common tool** adjusted to the sector



IRISS Industrial roadmap

From a European SSbD ambition to sectors/value chains and **national** implementation

Challenges, associated solutions pathways, cross-cutting enablers, technological and non technological, as well as newly integrated national perspectives (**SusChem-Community (SCC)** National Platforms)



Indicative roadmap structure

01

Policy and market context

Updated SSbD policy signal, sector relevance and expected use context

02

Technology challenges

Materials, process, performance, substitution and scale-up challenges by sector

03

Non-technology challenges

Data access, standards, business case, skills, acceptance, governance

04

Solution pathways

Examples of implementation levers and practical action lines per sector

05

Cross-cutting enablers

Education, metrics, digital tools, trusted data exchange and collaboration

06

National perspectives

Voluntary contributions from national platforms through SusChem-Community

Already published

- Captured knowledge between VCs
- State of play and basis for future inputs/needs
- Report experience and evidence

Updated Roadmap

- Prioritise implementation needs
- Separate technology and non-technology action lines
- Add national perspectives and deployment lines per MS

What this signals to all SSbD stakeholders

Actionable SSbD implementation, not only concept alignment

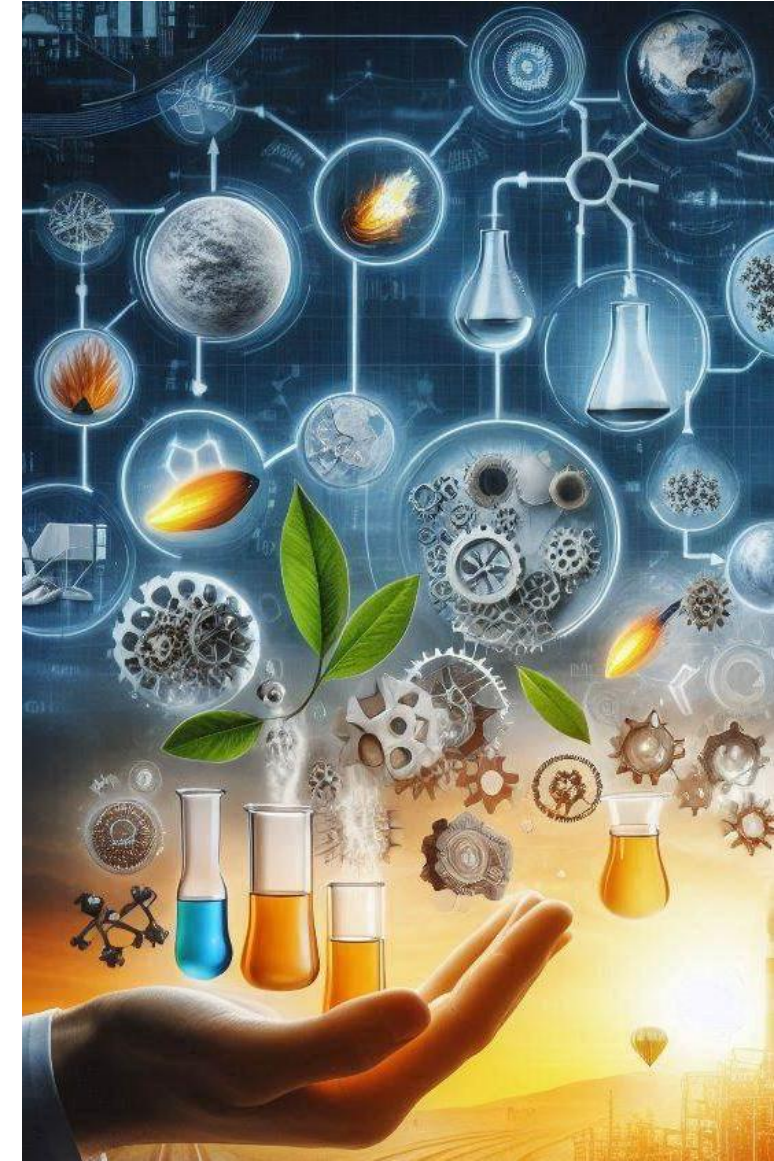
Clear relevance across industrial sectors and linked Advanced Materials initiatives

Concrete articulation of what industry, policy and Member States **each need to enable uptake**

IRISS community and platform positioned as a durable interface for capacity building and collaboration with various industries

Creating solutions

- Strong need for **cooperation** between industry, policy and science/research
- **Transfer knowledge** and best practice from larger organisations to SMEs
- **Cross-exchange of knowledge** between different value chains and disciplines
- **Training** on methodologies, developing skills
- **Educational programs** at universities
- Discussion on **trade-offs**
- Measures **against greenwash**



IRISS International SSbD Community



Knowledge and tools

- Learn from leading experts through webinars, workshops, guidelines, and practical tools to build capacity and support learning at different levels of expertise.
- Stay informed about the latest scientific findings, policy developments, and emerging trends in SSbD.



Community and networking

- Get access to virtual collaboration areas to connect with peers across industry, academia, and policy, and exchange insights, experiences, and solutions on specific topics or projects related to SSbD.
- Receive information about ongoing activities, events, and development within the community, and participate in forums that shape the future of SSbD.



Expert support

- Get guidance from experts in SSbD to support your implementation journey.
- Receive support in building consortia for research and innovation projects, finding suitable partners, and developing strong proposals.



iriss-ssbd.eu



500+ members are already part of the IRISS International SSbD Community!



IRISS membership scheme



Free	Standard	Extended																												
For individuals and organisations interested in SSbD	For individuals and organisations with SSbD ambitions	For individuals and organisations looking to advance the SSbD concept																												
<ul style="list-style-type: none">✓ Newsletters✓ Information about SSbD✓ Virtual information and collaboration areas (SSbD hub)✓ Guidelines about SSbD for your value chain✓ Training sessions and workshops*✓ Discount for annual SSbD conference**✓ Information on the latest scientific findings✓ Support for building consortia for projects✓ Support to tackle SSbD challenges✓ IRISS SSbD community's joint voice for SSbD✓ Directory of tools for SSbD assessment	<ul style="list-style-type: none">✓ Newsletters✓ Information about SSbD✓ Virtual information and collaboration areas (SSbD hub)✓ Guidelines about SSbD for your value chain✓ Training sessions and workshops*✓ Discount for annual SSbD conference**✓ Information on the latest scientific findings✓ Support for building consortia for projects✓ Support to tackle SSbD challenges✓ IRISS SSbD community's joint voice for SSbD✓ Directory of tools for SSbD assessment	<ul style="list-style-type: none">✓ Newsletters✓ Information about SSbD✓ All virtual information and collaboration areas (SSbD hub)✓ Guidelines about SSbD for your value chain✓ Training sessions and workshops*✓ Discount for annual SSbD conference**✓ Information on the latest scientific findings✓ Support for building consortia for projects✓ Support to tackle SSbD challenges✓ IRISS SSbD community's joint voice for SSbD✓ Directory of tools for SSbD assessment																												
	<table><tr><th>Organization type</th><th>Yearly fee</th></tr><tr><td>Micro SME / individuals</td><td>250 EUR</td></tr><tr><td>SME</td><td>500 EUR</td></tr><tr><td>Large enterprise turnover <EUR 1.5bn</td><td>1,500 EUR</td></tr><tr><td>Large enterprise turnover >EUR 1.5bn</td><td>3,000 EUR</td></tr><tr><td>RTO & non-profit</td><td>1,000 EUR</td></tr><tr><td>Academia</td><td>500 EUR</td></tr></table>	Organization type	Yearly fee	Micro SME / individuals	250 EUR	SME	500 EUR	Large enterprise turnover <EUR 1.5bn	1,500 EUR	Large enterprise turnover >EUR 1.5bn	3,000 EUR	RTO & non-profit	1,000 EUR	Academia	500 EUR	<table><tr><th>Organization type</th><th>Yearly fee</th></tr><tr><td>Micro SME / individuals</td><td>500 EUR</td></tr><tr><td>SME</td><td>1,000 EUR</td></tr><tr><td>Large enterprise turnover <EUR 1.5bn</td><td>3,000 EUR</td></tr><tr><td>Large enterprise turnover >EUR 1.5bn</td><td>6,000 EUR</td></tr><tr><td>RTO & non-profit</td><td>2,000 EUR</td></tr><tr><td>Academia</td><td>1,000 EUR</td></tr></table>	Organization type	Yearly fee	Micro SME / individuals	500 EUR	SME	1,000 EUR	Large enterprise turnover <EUR 1.5bn	3,000 EUR	Large enterprise turnover >EUR 1.5bn	6,000 EUR	RTO & non-profit	2,000 EUR	Academia	1,000 EUR
Organization type	Yearly fee																													
Micro SME / individuals	250 EUR																													
SME	500 EUR																													
Large enterprise turnover <EUR 1.5bn	1,500 EUR																													
Large enterprise turnover >EUR 1.5bn	3,000 EUR																													
RTO & non-profit	1,000 EUR																													
Academia	500 EUR																													
Organization type	Yearly fee																													
Micro SME / individuals	500 EUR																													
SME	1,000 EUR																													
Large enterprise turnover <EUR 1.5bn	3,000 EUR																													
Large enterprise turnover >EUR 1.5bn	6,000 EUR																													
RTO & non-profit	2,000 EUR																													
Academia	1,000 EUR																													

SSbD 26

Stockholm, Sweden

 9 -11th of November 2026



Empa

Materials Science and Technology



Executive board and Value chain ambassadors



ivl
Swedish Environmental
Research Institute



BNN



cefic



Empa
Materials Science and Technology



LEUPHANA
UNIVERSITÄT LÜNEBURG



SSbD
Consulting



National Institute for Public Health
and the Environment
Ministry of Health, Welfare and Sport



Tekniker
MEMBER OF BASQUE RESEARCH
& TECHNOLOGY ALLIANCE



UNIVERSITY OF
BIRMINGHAM



cea



CLEPA
European Association of Automotive Suppliers



EFCC



ETP



ifra
The International
Fragrance Association



INL
INTERNATIONAL IBERIAN
NANOTECHNOLOGY
LABORATORY



IPC

Join us!

IRISS International SSbD Community



iriss-ssbd.eu

Read more at www.iriss-ssbd.eu
Follow us on LinkedIn: [IRISS International SSbD Community](#)